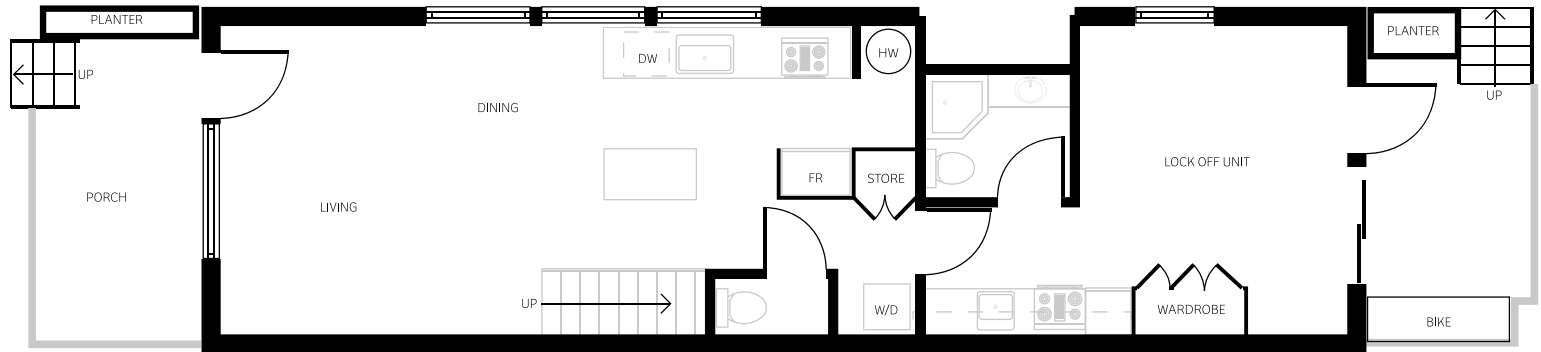




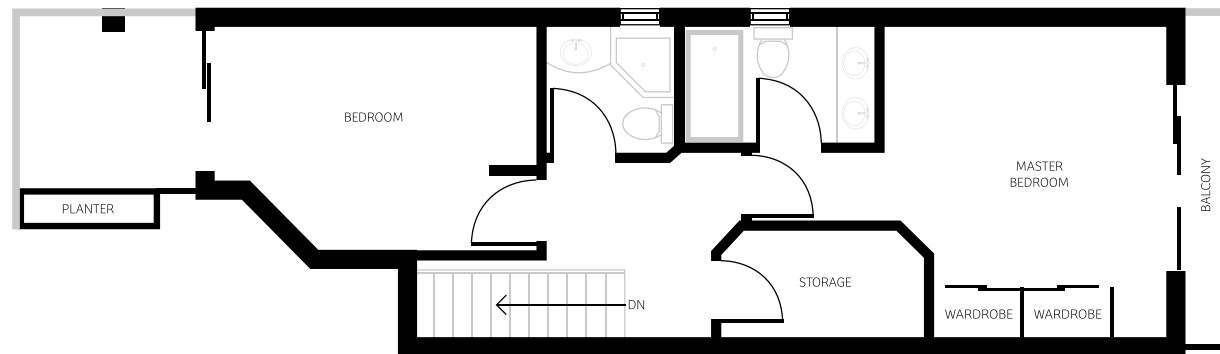
UNIT 1

2 BEDROOM
PLUS LOCK OFF UNIT

1,293 FT²



MAIN | 727 ft² (INCLUDING LOCK OFF @ 233ft²)



UPPER | 566 ft²

In our continuing effort to improve and maintain the high standard of Coronation Place, the developer reserves the right to modify or change plans, square footage, specifications, features and prices without notice.

All dimensions and sizes are approximate and are based on architectural measurements.

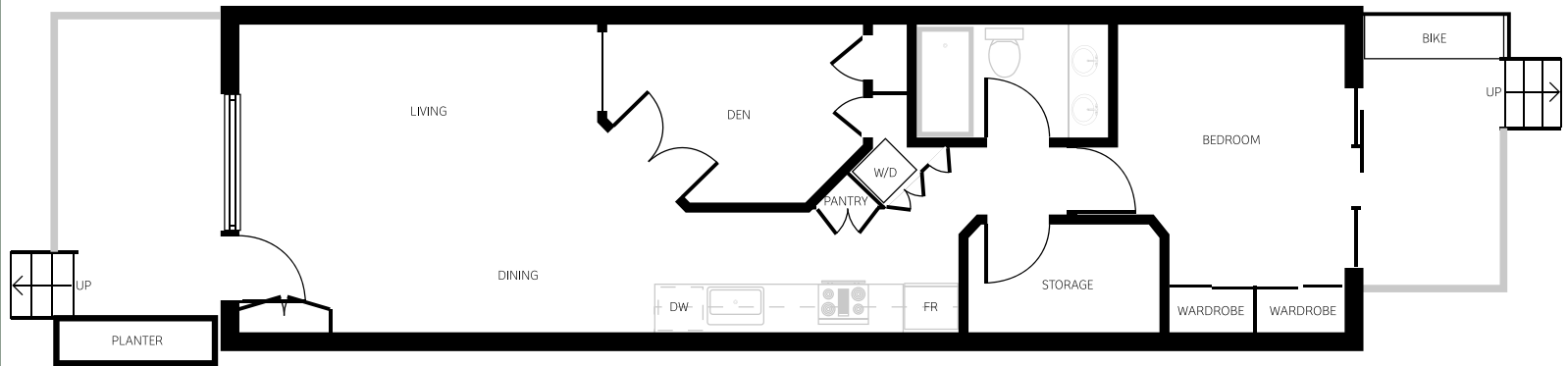
NOT FOR CONSTRUCTION



UNIT 2

1 BEDROOM + DEN
PLUS LARGE STORAGE

732 FT²



MAIN | 732 ft²

In our continuing effort to improve and maintain the high standard of Coronation Place, the developer reserves the right to modify or change plans, square footage, specifications, features and prices without notice.

All dimensions and sizes are approximate and are based on architectural measurements.

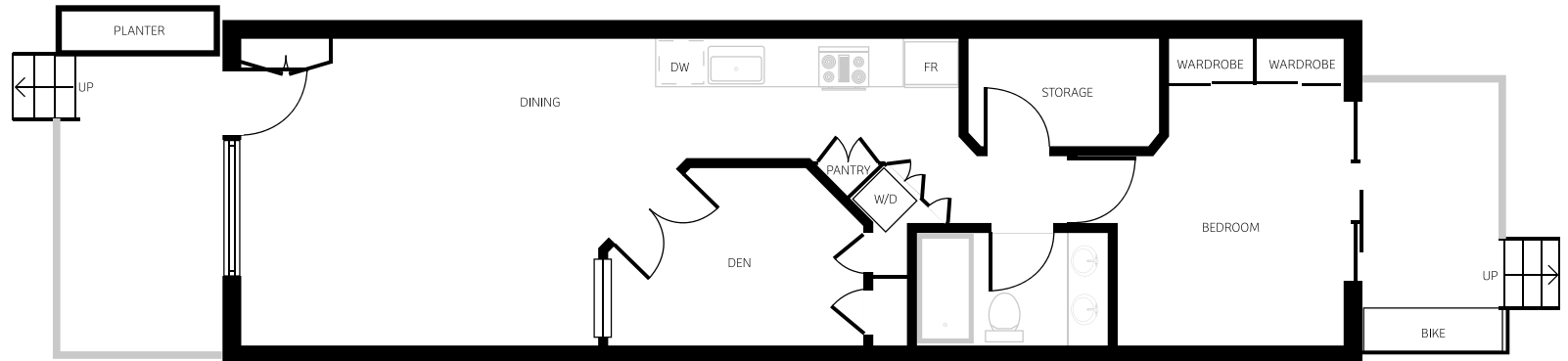
NOT FOR CONSTRUCTION



UNIT 3

1 BEDROOM + DEN
PLUS LARGE STORAGE

732 FT²



MAIN | 732 ft²

In our continuing effort to improve and maintain the high standard of Coronation Place, the developer reserves the right to modify or change plans, square footage, specifications, features and prices without notice.

All dimensions and sizes are approximate and are based on architectural measurements.

NOT FOR CONSTRUCTION



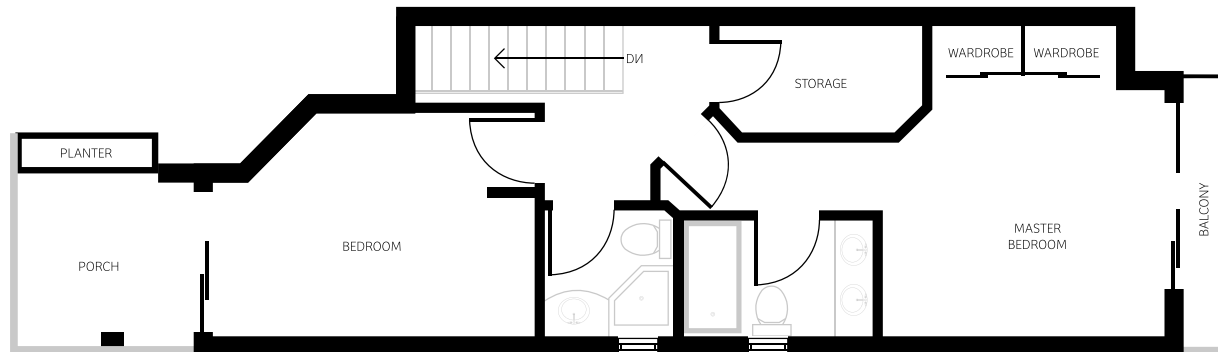
UNIT 4

2 BEDROOM
PLUS LOCK OFF UNIT

1,277 FT²



MAIN | 715 ft² (INCLUDING LOCK OFF @ 233ft²)



UPPER | 560 ft²

In our continuing effort to improve and maintain the high standard of Coronation Place, the developer reserves the right to modify or change plans, square footage, specifications, features and prices without notice.

All dimensions and sizes are approximate and are based on architectural measurements.

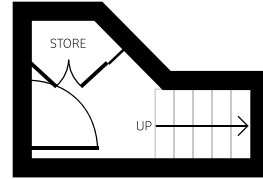
NOT FOR CONSTRUCTION



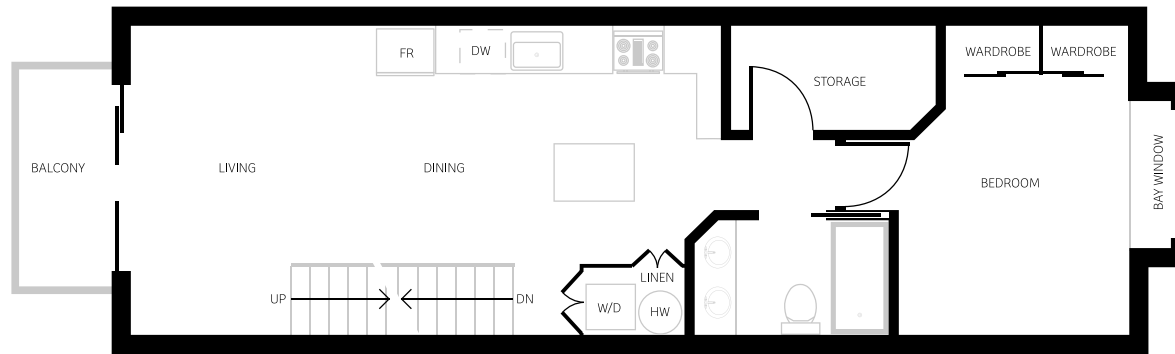
UNIT 5+7

3 BEDROOM
PLUS LARGE STORAGE

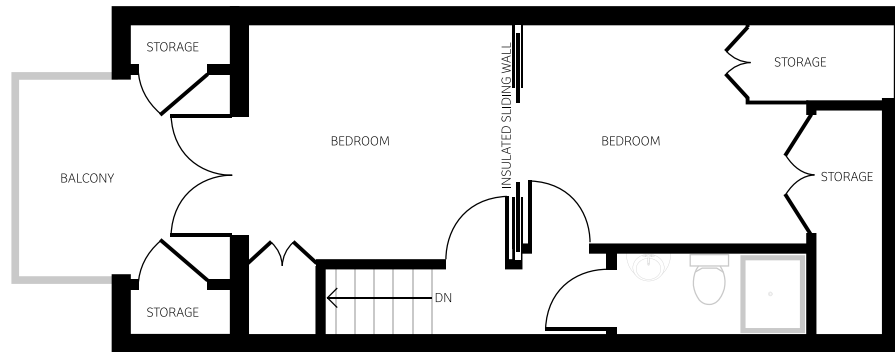
1,111 FT²



ENTRANCE/GROUND | 75 ft²



MAIN | 660 ft²



UPPER | 376 ft²

In our continuing effort to improve and maintain the high standard of Coronation Place, the developer reserves the right to modify or change plans, square footage, specifications, features and prices without notice.

All dimensions and sizes are approximate and are based on architectural measurements.

NOT FOR CONSTRUCTION



UNIT 6+8

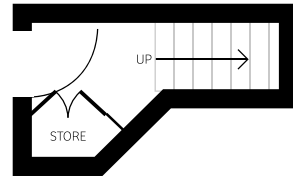
3 BEDROOM
PLUS LARGE STORAGE

1,111 FT²

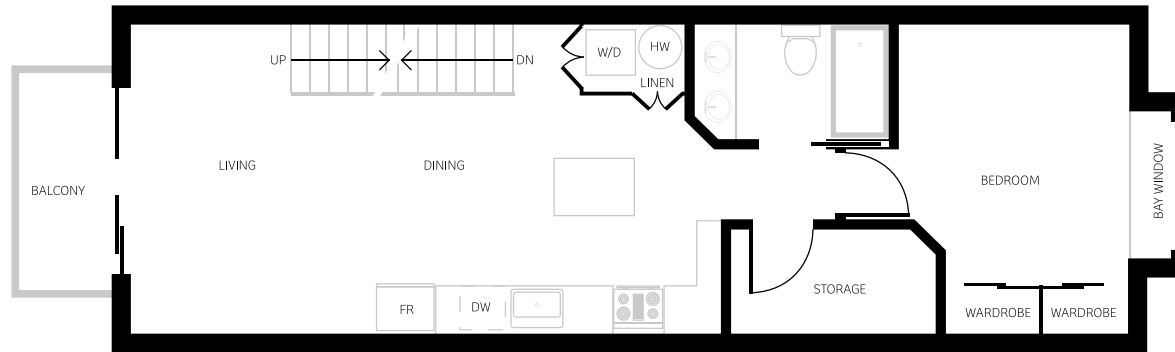
In our continuing effort to improve and maintain the high standard of Coronation Place, the developer reserves the right to modify or change plans, square footage, specifications, features and prices without notice.

All dimensions and sizes are approximate and are based on architectural measurements.

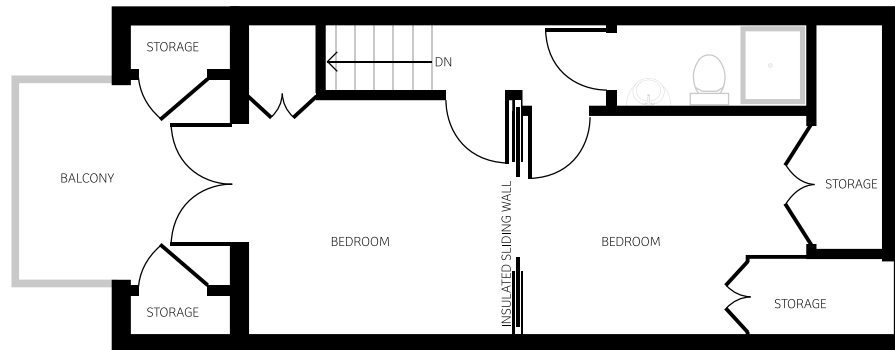
NOT FOR CONSTRUCTION



ENTRANCE/GROUND | 75 ft²



MAIN | 660 ft²



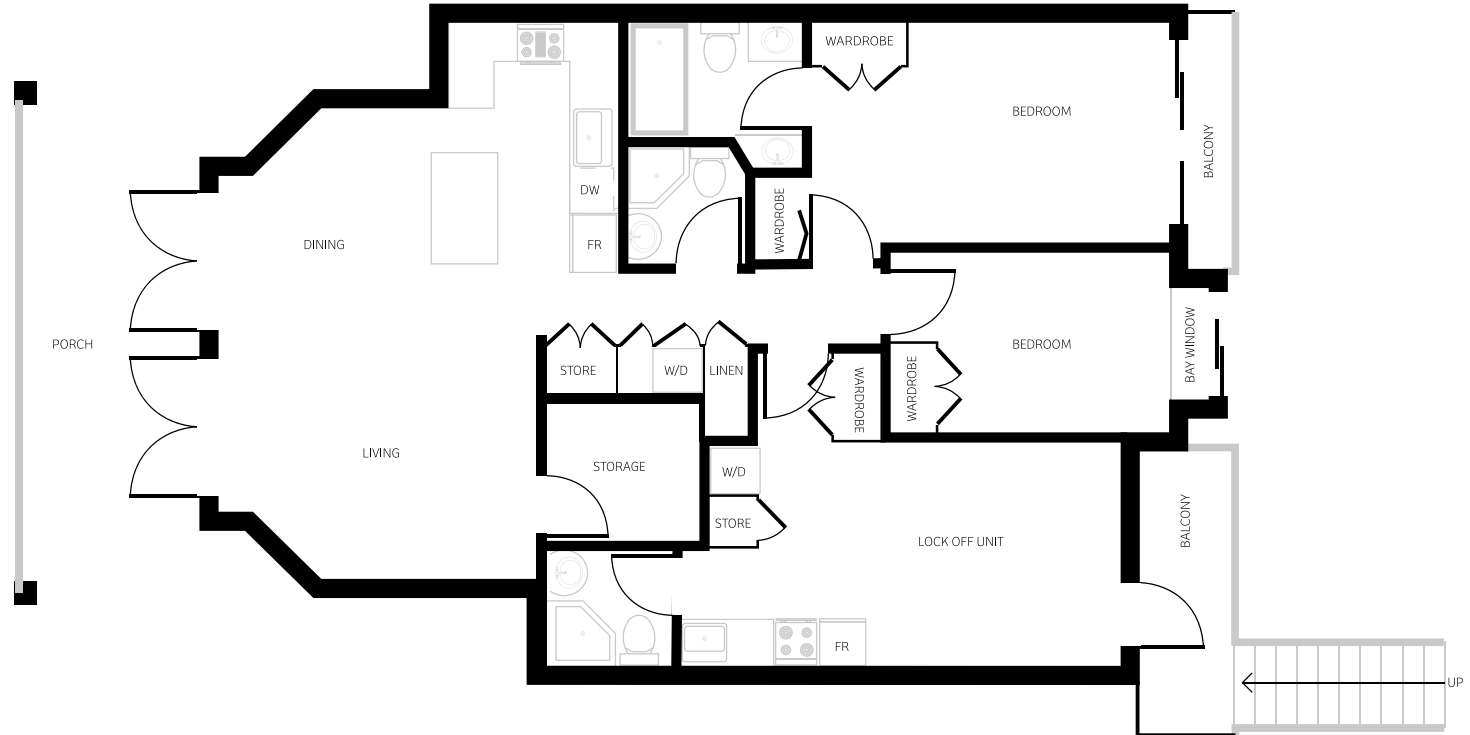
UPPER | 376 ft²



UNIT 9

2 BEDROOM
PLUS LOCK OFF UNIT

1,090 FT²
UNIT



MAIN | 1,090 ft² (INCLUDING LOCK OFF @ 230ft²)

In our continuing effort to improve and maintain the high standard of Coronation Place, the developer reserves the right to modify or change plans, square footage, specifications, features and prices without notice.

All dimensions and sizes are approximate and are based on architectural measurements.

NOT FOR CONSTRUCTION